

# 2011

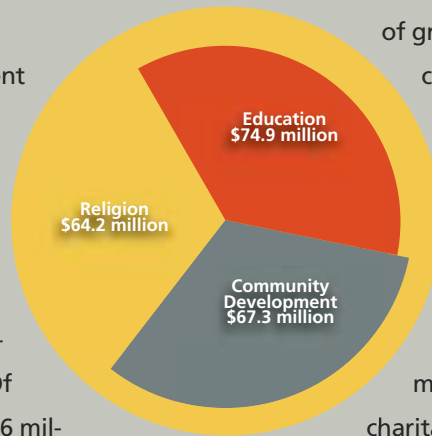
## Finances and Grantmaking

**During 2011 Lilly Endowment distributed grant payments of \$206.4 million and approved \$208.7 million in new grants.**

### Grants paid Chart 1

In 2011 the Endowment paid grants of \$206.4 million. In this category, education grants accounted for \$74.9 million or 36 percent of the total; community development grants totaled \$67.3 million or 33 percent; religion grants added up to \$64.2 million or 31 percent.

As in previous years, most grants were paid to organizations in Indiana – a total of \$141.2 million (68 percent). Of the payment total of \$206.4 million, \$96 million (46 percent) was paid to non-Marion County grantees in Indiana and \$45.2 million (22 percent) to Marion County (Indianapolis) grantees. Organizations outside Indiana received \$65.2 million or 32 percent, mostly from religion grants.



grants paid in 2011, nearly three-fourths (69 percent) of grants approved went to Indiana organizations. Of the \$208.7 million in grants approved, \$98.2 million (47 percent) was approved for non-Marion county grantees in Indiana and \$45.5 million (22 percent) to Marion County (Indianapolis) grantees. Indiana organizations thus were awarded \$143.7 million (69 percent) of grants approved. \$65 million (31 percent) in grants was approved for non-Indiana organizations.

### Cumulative figures

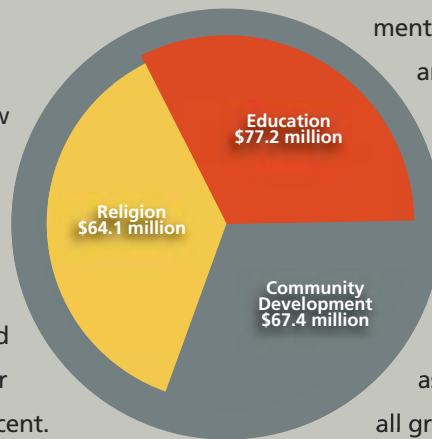
The generosity of its founders in establishing the Endowment in 1937 has resulted over the years in the payment of \$7.7 billion in grants to 8,627 charitable organizations, most of them in Indiana. Of that \$7.7 billion, \$3.2 billion supported education (41 percent), \$2.6 billion supported community development (34 percent), and \$1.9 billion supported religion (25 percent). At the end of 2011 the Endowment's assets totaled \$6.2 billion.

### Grants approved Chart 2

During 2011 the Endowment approved \$208.7 million to 757 grantees, 249 new to the Endowment.

Education grants totaled the most dollars at \$77.2 million or 37 percent of the total. Approvals for community development grants totaled \$67.4 or 32 percent, while approvals for religion totaled \$64.1 million or 31 percent.

Similar to the geographic distribution of the



Board-approved grants are listed in the back of this report and are divided into community development, education and youth, and religion and philanthropy. Discretionary grants of up to \$7,500, authorized by the officers, are listed as a single line item for each division.

The Endowment's match for the charitable contributions of staff, retirees and Board members is reported as a single line item before the total of all grants approved. Grant Guidelines and Procedures are outlined on pages 52-53.